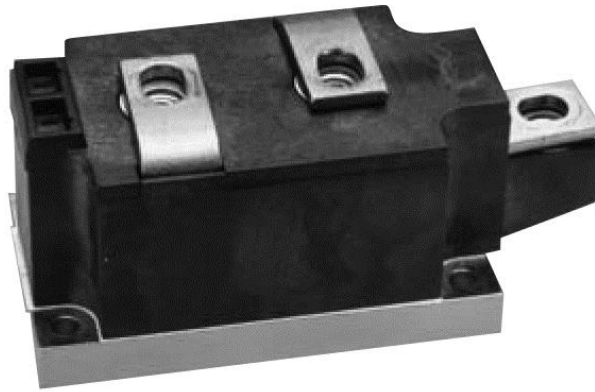


# Powerex ND and NS POW-R-BLOK™



## DESCRIPTION:

The Powerex **ND POW-R-BLOK™** and **NS POW-R-BLOK™** are designed for use in applications requiring phase control and isolated packaging. The modules are isolated for easy mounting with other components on a common heatsink. The **POW-R-BLOK™** has been tested and recognized by the Underwriters Laboratories.

Powerex has expanded the module product line to include several new ratings within this industry standard package. We now offer:

- A dual diode ND41 module rated at 3400V 250A to allow for power rectification above the previous 2500V products.
- A single diode NS41 module for customers that require only one diode in the package
- Fast recovery diode bloks ( $t_{rr}$  to 1.0  $\mu$ s) are available upon special request. Please contact the factory.

## FEATURES:

- Electrically Isolated Heatsinking
- Aluminum Nitride Insulator
- Compression Bonded Element
- Metal Baseplate
- Low Thermal Impedance for Improved Current Capability
- Quick Connect Gate Terminal with Provision for Keyed Mating Plug
- UL Recognized Design (UL Recognition Pending on New Products)

## BENEFITS:

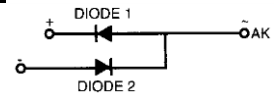
- No Additional Insulation Components Required
- Easy Installation
- No Clamping Components Required
- Reduce Engineering Time

## APPLICATIONS:

- Large IGBT Circuit Front Ends
- AC & DC Motor Drives
- Battery Supplies
- Power Supplies
- Bridge Circuits

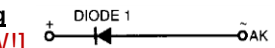
## Dual Diode POW-R-BLOK™ Module

Type	Voltage	Current Rating
ND41	600-2400V	260A
	600-2000V	320A
	600-1800V	350A
	2600-3400V	250A [NEW!]



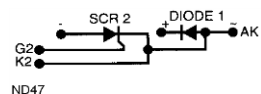
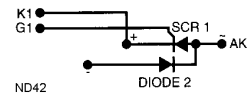
## Single Diode POW-R-BLOK™ Module

Type	Voltage	Current Rating
NS41	600-2400V	260A [NEW!]



## SCR/Diode POW-R-BLOK™ Module

Type	Voltage	Current Rating
ND42	600-2000V	210A
ND42	600-1800V	250A
ND47	600-2000V	210A
ND47	600-1800V	250A



## Dual SCR POW-R-BLOK™ Module

Type	Voltage	Current Rating
ND43	600-2000V	210A
ND43	600-1800V	250A
ND43	2200V	250A [NEW!]
ND43	600-1600V	330A [NEW!]

