


Rose Enclosures  
Bopla Enclosures

# CONTENT • MATTERS



Get detailed drawings & technical  
information at [phoenixmecano.com](http://phoenixmecano.com)



## PROTECTING WHAT'S INSIDE

Designed to house critical components, our IP-rated enclosures provide reliable protection where dirt, dust, and exposure to liquids or harsh corrosives threaten the performance of your investment.

Through our Rose Industrial Enclosures and Bopla Electronic Enclosures product lines, we offer a value-packed line of enclosures, cabinets, and accessories that keep your electronic devices safe – extending their life and protecting your business from costly downtime.

---

## MODIFIED TO MEET YOUR NEEDS

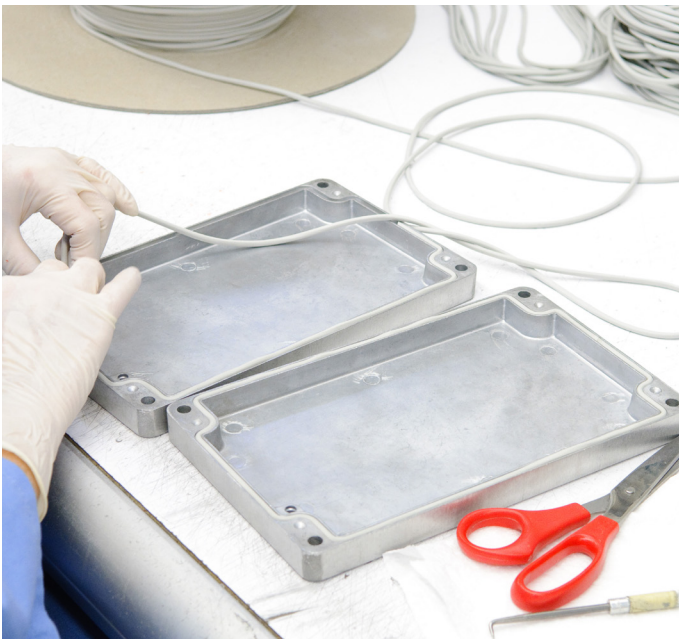
---

More than 90% of our enclosure orders are customized, so we've become experts at ensuring our customers get the exact product they need — on time, every time — even when that means modifying a standard product or creating a new one.

We have a comprehensive range of customization options and one of the most experienced in-house engineering teams at your disposal. So, no matter how complex your requirements or application, you can expect helpful support, shorter lead times, and fewer complications.

### **CUSTOM BUILD-A-BOX®**

Our Rose Industrial Enclosures' Custom Build-A-Box® is a series of extrusions that can be cut to any length from stock extrusions, and assembled with dust or watertight lids as required. For today's engineers, these systems offer quick, rugged housing and far greater design possibilities.



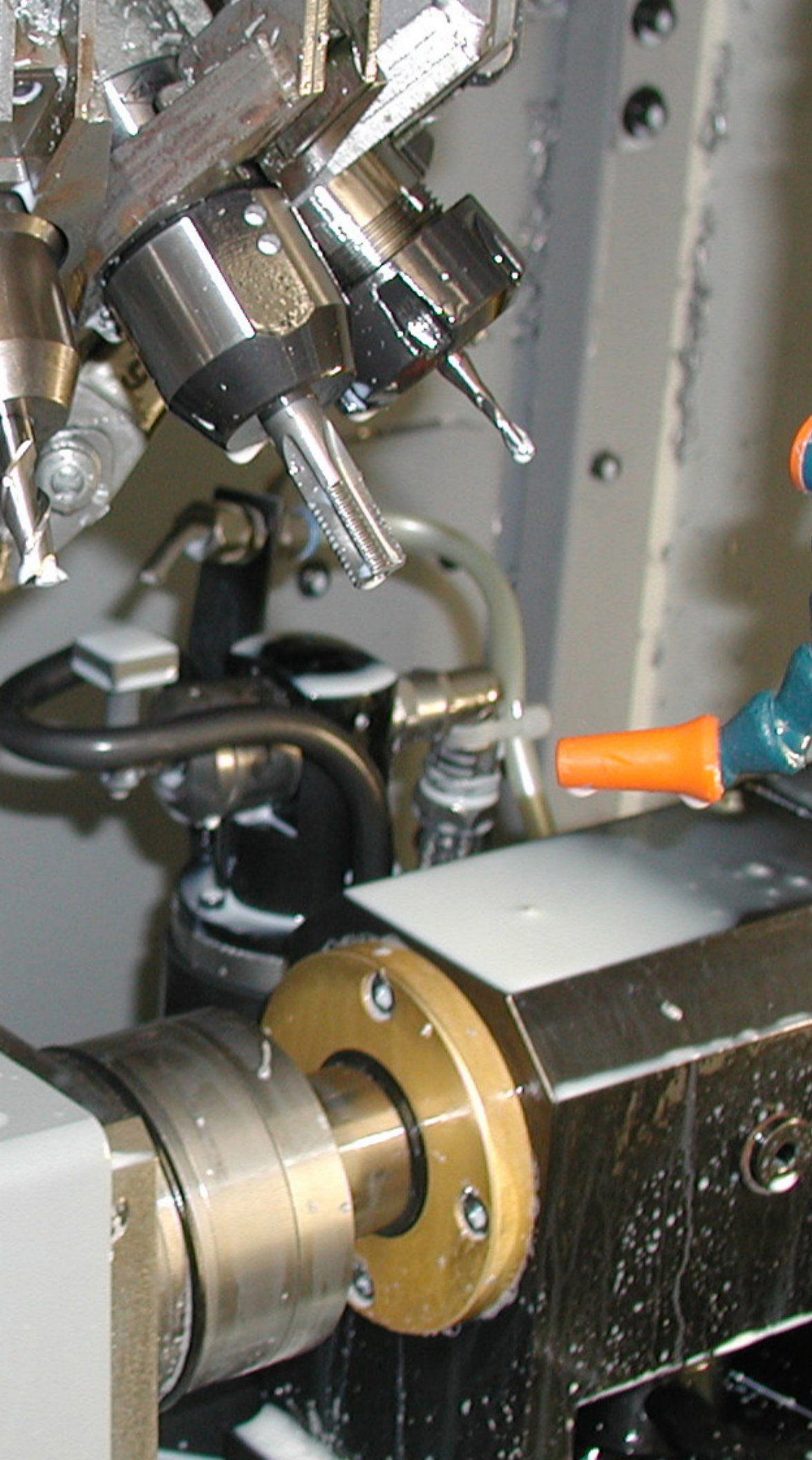
## CONCEPT TO COMPLETION

*Many people believe that they can order a standard enclosure and customize it themselves to fit their specific application needs; however, this isn't always the case.*

*Customizing an enclosure can cause minor to serious issues, rendering an enclosure defective, and in extreme cases, useless. That is why, at Phoenix Mecano, we provide conceptual drawings and designs to ensure all your requirements are met.*

*From assembly, machining and engraving, to painting, surface treatments and more, we do it all in-house which means fewer suppliers and fewer delays!*





**Machining**



**Finishing & Painting**



**Branding & Labeling**



**System Solutions**



**On-Site Support**



---

## YOUR ONE-STOP SOURCE

---

At Phoenix Mecano, getting an enclosure solution is simple. No matter what your production volume, our team of enclosure experts will provide conceptual drawings and designs, and ensure all your requirements are met.

### WHEN YOU LET US CUSTOMIZE...

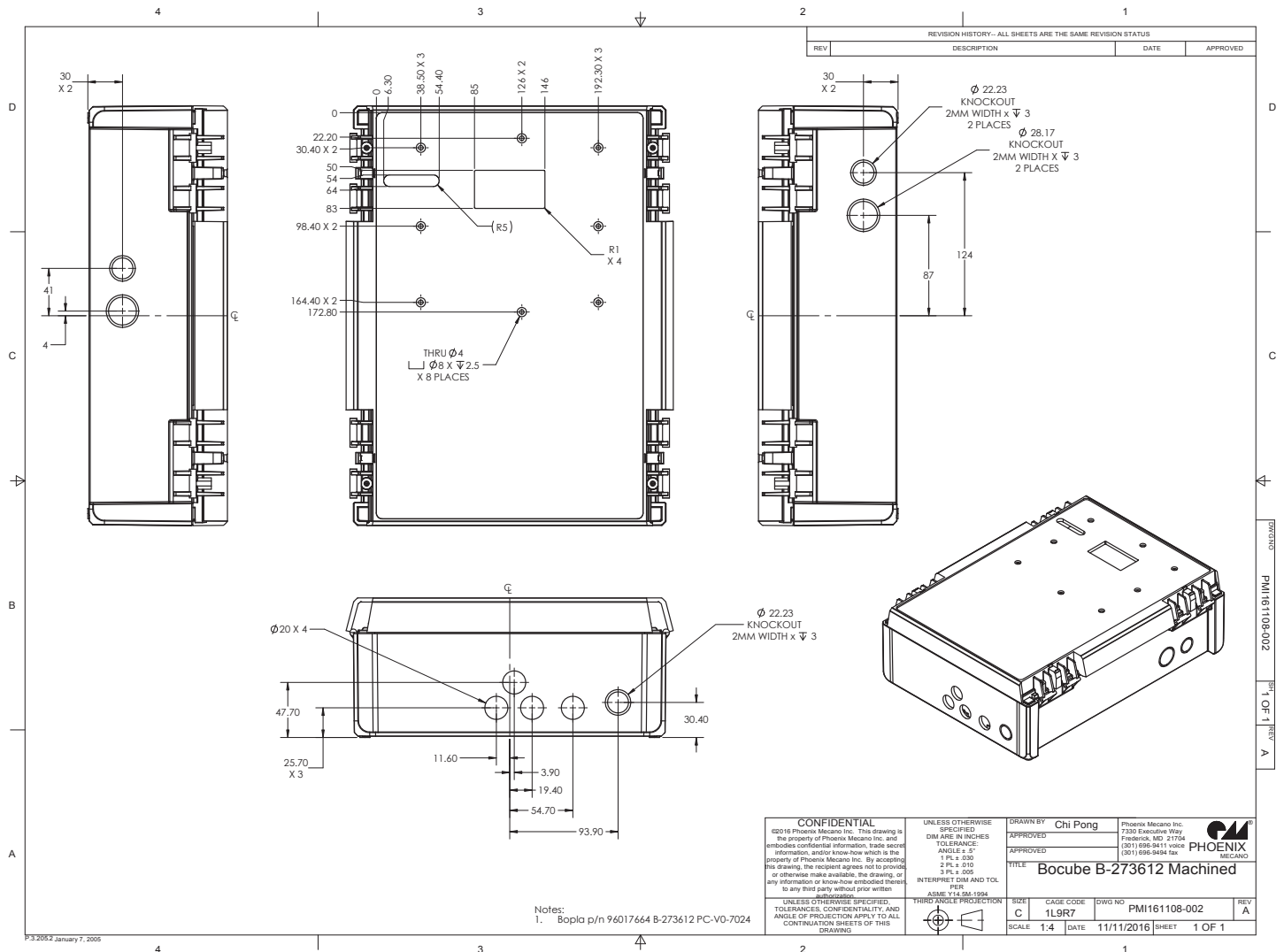
- You have one point of contact for shipping, billing, and other concerns
- You can be confident that the job will be done right because no one knows our enclosures better than our team
- You'll never need to purchase extra enclosures because your local supplier made an error



# IT ALL STARTS WITH AN IDEA

We pride ourselves on working closely with our customers to turn their ideas into a reality. Join forces with our skilled engineers to develop an enclosure that meets all your company's needs.

With deep application knowledge and a strong understanding of technical, compliance, and certification requirements, we can deliver a cost-effective solution for even the most complex applications. Don't wait any longer in converting your pencil sketches into final drawings!





**MACHINING**

**SURFACE  
TREATMENT**

**BRANDING AND  
LABELING**

**ENGRAVING**

**FINISHING AND  
PAINTING**

**ASSEMBLY**

**SYSTEM  
SOLUTIONS**





# YOUR ENCLOSURE JOURNEY



## ASSEMBLY

*Short on Lead Times. High on Quality.*

We handle general assembly of cable glands, terminals, mounting plates, DIN rails, connectors, and any electrical/electronic components.



## BRANDING AND LABELING

*Incorporating Your Corporate Identity*

Features of our branding and labeling services include high quality screen printing, automated pad printing, adhesive label and overlay installation, as well as comprehensive design services.



## SYSTEM SOLUTIONS

*Optimizing Your Solution*

To help you optimize the production of your complete solution, we offer membrane keypad installation/keypad machining, workstation assemblies, HMI assemblies and assembly of spindle driven linear units.



## ENGRAVING

*Add a Personal Touch*

Our engravings cannot be removed, and resist most external mechanical influences as well as aggressive environments. Whether you're looking for corporate branding or important regulatory labeling, our engraving services provide a long-term, forgery-proof option.



## MACHINING

*Total Quality, From Design to Delivery*

Our CNC machining services include drilling, milling, cutting and tapping. We ensure every enclosure meets the critical quality standards.



## FINISHING AND PAINTING

*With Phoenix Mecano, You've Got it Made in Any Shade*

We offer a range of individual processing and surface finishing capabilities. Our finishing and painting services include Masking, Powder Coating, Painting and Shield Coating.



## SURFACE TREATMENT

*Meeting the Challenges of Today's Toughest Operating Environments*

If you need more rugged resistance to abrasion, corrosion, or wear in your aluminum housing, we offer chemical treatments such as Iriditing and Anodizing.

# ROSE ENCLOSURES

## Aluminum Standard and Aluform

- Excellent RFI/EMC shielding
- Easy to customize
- Robust enclosure for harsh environments
- Internal mounting for din rails or pc boards
- Great for high temp applications
- 42 sizes



## Standard Polyester (Fiberglass)

- Watertight
- Resistant to chemicals and harsh outdoor environments including marine
- Thick wall construction
- Rated IP66 and corrosion resistant



## EX Enclosures

- Intended for hazardous environments
- Materials: aluminum, stainless steel and polyester
- Empty enclosures for EXE/EX IA terminals and fittings
- Mine certified types are also available



## HMI

- Aluminum body with integrated side handles and reversible rear door or fixed rear panel
- Standard powder coated RAL7035 or anodized aluminum body with RAL9007 corners; custom colors available on request
- Available console/keyboard option
- Available in five mounting depths (from 80 to 270mm)
- Various sizes of supporting Suspensions Arms are available (GTN II is shown)



## Extrusion Products (Build a Box and Multitronic)

- Good RFI/EMC characteristics
- Die cast (watertight) or plate (dust tight) lids available
- Additional value-add services available
- Wide variety of shapes and sizes
- Can be cut to custom lengths
- Watertight and dusttight versions



# BOPLA ENCLOSURES

## Plastic Boxes

- Tough, lightweight boxes for instrumentation, communications and light industrial applications
- Large number of sizes and configurations available
- The bestselling BOPLA product in North America



## Aluminum Extrusions - Alubos

- Rugged, stylish aluminum extrusion
- Highly configurable to support a broad range of applications
- Wide variety of accessories



## Card Enclosures (RCP, Combicard)

- Control instrumentation enclosure with separate terminal chamber
- Protects electronics while allowing access for installation and maintenance



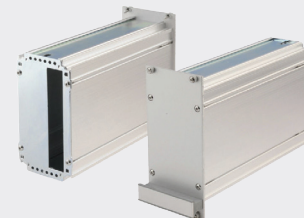
## Handheld Enclosures (Streamline, BoPad)

- Handheld enclosures configurable to fit the project requirements
- Customizable



## Interzoll

- 19-inch sub rack components
- EMC-protected variants available
- Support for small to medium run manufacturing runs



Rose Enclosures  
Bopla Enclosures

Get detailed drawings & technical  
information at [phoenixmecano.com](http://phoenixmecano.com)



**PHOENIX MECANO**

7330 Executive Way  
Frederick, MD 21704